

CAXperts

CopyMoveRotate

Reference Guide



Copyright

Copyright © 2002 CAXperts GmbH. All Rights Reserved.

Including software, file formats, and audiovisual displays; may be used pursuant to applicable software licence agreement; contains confidential and proprietary information of CAXperts and/or third parties which is protected by copyright law, trade secret law, and international treaty, and may not be provided or otherwise made available without proper authorization.

Restricted Rights Legend

Rights reserved under the copyright laws of the Federal Republic of Germany.

Warranties and Liabilities

All warranties given by CAXperts about equipment or software are set forth in your purchase contract, and nothing stated in, or implied by, this document or its contents shall be considered or deemed a modification or amendment of such warranties. CAXperts believes the information in this publication is accurate as of its publication date.

The information and the software discussed in this document are subject to change without notice and are subject to applicable technical product descriptions. CAXperts is not responsible for any error that may appear in this document.

The software discussed in this document is furnished under a licence and may be used or copied only in accordance with the terms of this licence. THE USER OF THE SOFTWARE IS EXPECTED TO MAKE THE FINAL EVALUATION AS TO THE USEFULNESS OF THE SOFTWARE IN HIS OWN ENVIRONMENT.

Trademarks

CAXperts is a registered trademark of CAXperts GmbH. Intergraph, the Intergraph logo, SmartSketch, FrameWorks, SmartPlant, INtools, MARIAN, PDS, IGDS, RIS and IntelliShip are registered trademarks of Intergraph Corporation. IGDS file formats ©1987-1994 Intergraph Corporation. Microsoft and Windows are registered trademarks of Microsoft Corporation. Bentley, the Bentley logo "B," and MicroStation are registered trademarks of Bentley Systems, Inc. ISOGEN is a registered trademark of Alias Limited. Other brands and product names are trademarks of their respective owners.

Contents

1	Introduction	4
1.1	General conventions	4
	Typefaces.....	4
	Symbols.....	5
2	Installation	6
2.1	Setup.....	6
2.2	Licence	6
3	Working with CopyMoveRotate	7
3.1	Privilege manager.....	7
3.2	Settings	8
3.3	Selecting a PDS project.....	8
3.4	Selecting objects in the tree view	9
3.5	Copy models/drawings.....	11
3.6	Edit models/drawings.....	12
3.7	Delete models/drawings	13
3.8	Transform models/drawings.....	13
	Handling for non-PDS files.....	15
3.9	Change site ID, index or partition of models/drawings	16
3.10	Lock/unlock models/drawings	17
3.11	Edit areas	17
3.12	Copy lines.....	17
3.13	Edit piping attributes	18
3.14	Delete lines.....	20
3.15	Transform lines.....	20
3.16	Copy equipment	21
3.17	Edit equipment attributes	21
3.18	Delete equipment.....	22
3.19	Transform equipment	22
3.20	Edit nozzle attributes.....	22
3.21	Edit raceway attributes	23
3.22	Edit reference files	23
3.23	Command line mode	23
3.24	Colour mark-up in reports.....	25
4	Technical support.....	26

1 Introduction

CopyMoveRotate is a software utility for copying, moving and rotating models and drawings in Intergraph PDS (rotation of drawings and moving/copying of drawings with composite views is not supported in this version). Copying of models is possible inside a single project as well as between two projects. Lines and equipment may be copied between projects and deleted. Additionally, design schemas (Line IDs, Unit Code, etc.), equipment and raceway attributes can be edited using Microsoft Excel. **CopyMoveRotate** also provides functionality for changing Site IDs (and/or model index numbers or partition numbers, names and descriptions) of models and drawings. Names and descriptions can also be edited for areas. **CopyMoveRotate** may also be controlled via command line parameters.

1.1 General conventions



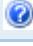
This document contains many visual cues to help you understand the meaning of certain words or phrases. The use of different fonts for different types of information allows you to scan the document for key concepts or commands. Symbols help abbreviate and identify commonly used words, phrases, or groups of related information

Typefaces

<i>Italic</i>	Indicates a system response, which is an explanation of what the software is doing. For example, <i>The text is placed in the viewing plane.</i>
Bold	Indicates a command name, parameter name, or dialog box title. Command paths are shown using an arrow between command names. For example, Choose File → Open to load a new file.
Sans serif	Indicates a system prompt or message, which requires an action be taken by the user. For example, Select first segment of alignment
Normal typewriter	Indicates an actual file or directory name. For example, The ASCII report is stored in the layout.rpt file.
Bold typewriter	Indicates what you literally type in. For example, Key in original.dat to load the ASCII file.

Symbols

This document uses the following symbols to identify special information:

-  Note – important supplemental information.
-  Map or path – shows you how to get to a specific command or form.
-  More information – indicates there is additional or related information.

2 Installation

2.1 Setup

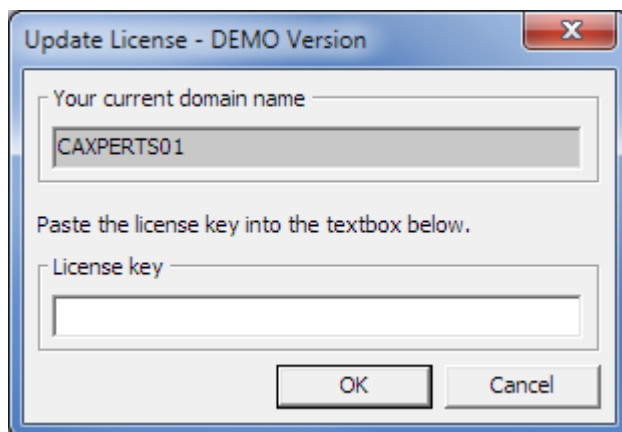
Requirements:

- Supported operating systems:
 - Microsoft Windows XP
 - Microsoft Windows Server 2003
 - Microsoft Windows Vista
 - Microsoft Windows 7
- PDS 6.4 or later
- MicroStation SE/J
- Microsoft Excel 2000 or later

Administrator rights are required on each computer to install **CopyMoveRotate**.


2.2 Licence

Once the setup has been completed and the program is started, a licence key will be requested as shown below.



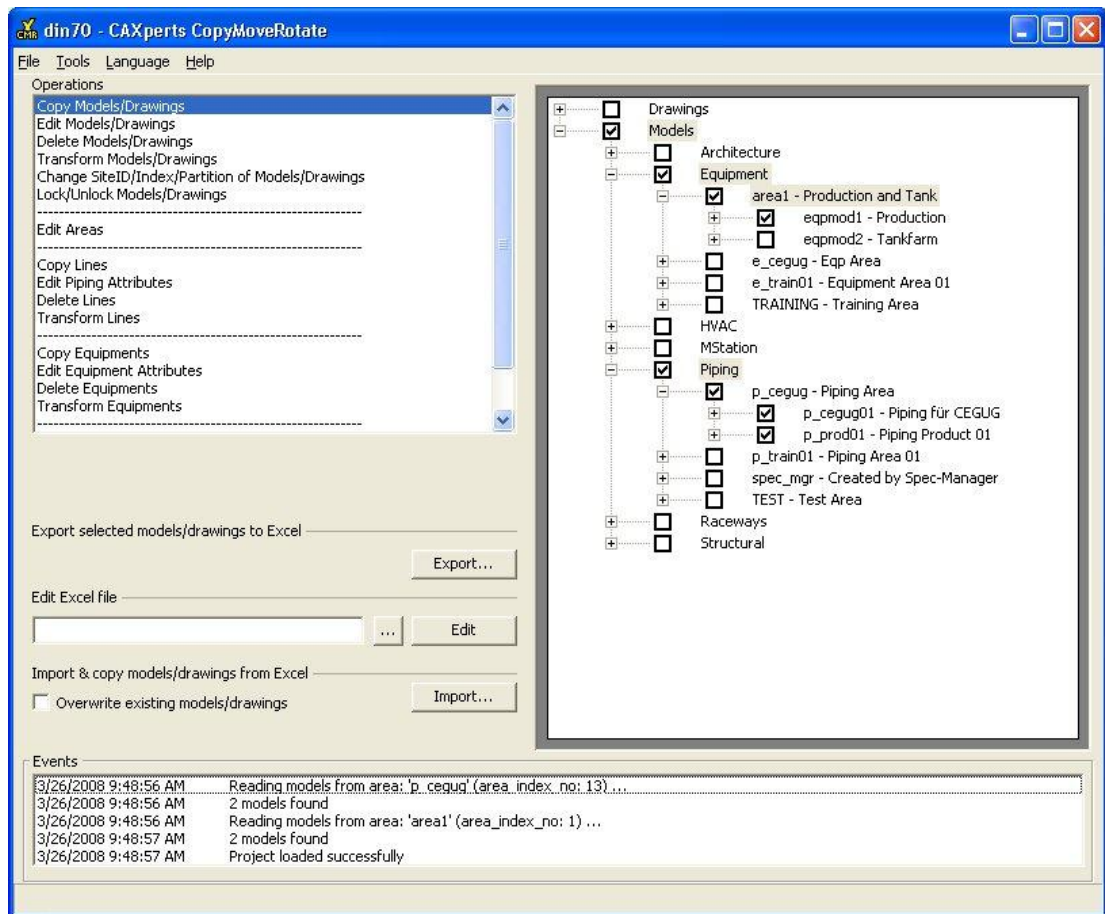
CAXperts will need your **Current domain name** to issue a licence key.

Please place this licence key into the **Licence key** text box and press **OK**.

 Note: Without a valid licence key the software will run in demo mode.

3 Working with CopyMoveRotate

When you start **CopyMoveRotate**, the main window shows up:



The main window is divided into three functional parts:

- The control area on the left side
- The project tree view on the right side and
- The events log at the bottom of the window

3.1 Privilege manager

The **Privilege manager** allows you to lock functions for specific users/groups. The assignment of privileges is based on the Windows (domain) users and groups. This means that you do not have to establish a new privileges management system.

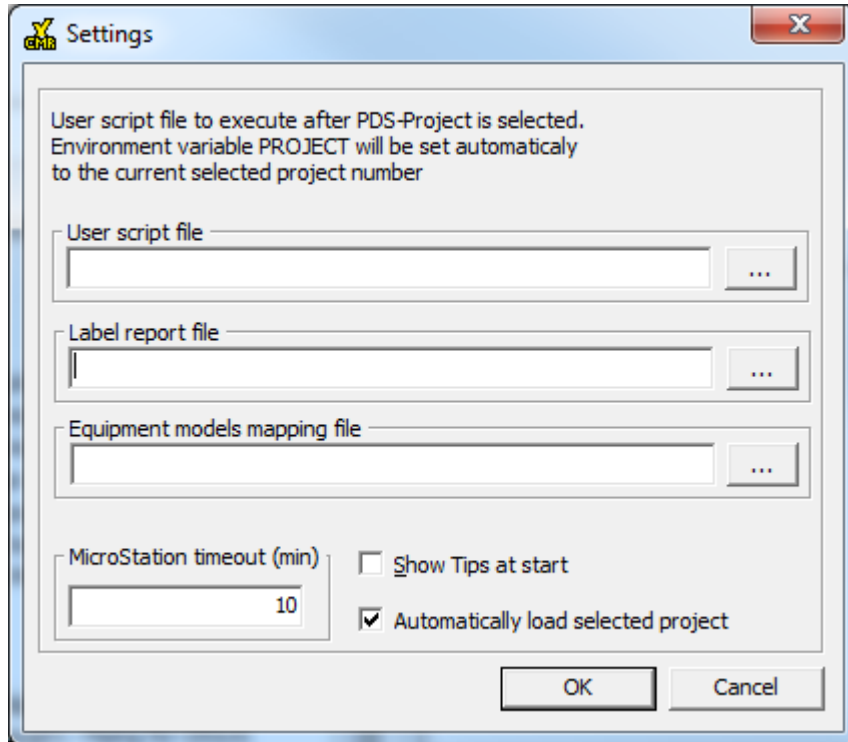
Group and user rights are linked by an OR operation: If a group has a certain privilege in **CopyMoveRotate**, every user in this group will have this privilege, even if this privilege is not explicitly stated in the settings for this user.

The access rights are stored in an Access database (**CopyMoveRotate.mdb**). This is located in the `proj_file` directory. The privileges are thus the same for all the projects in a `proj_file`.

Access to the Access database should be controlled using the Windows access rights.

The default setting is “Allow” for every user and group.

3.2 Settings



Go to **Tools**→**Settings** to show up the **Settings** dialogue.

User script file: If defined, **CopyMoveRotate** will execute a user defined script file (.bat). In this batch file, the project name is already defined in the environment variable PROJECT. This function may be used, e.g. if network drives containing project data have to be mounted or environment variables have to be set before the project can be accessed. In this case, PDS won’t be started via PD_Shell but via a special software program that executes the commands described above.

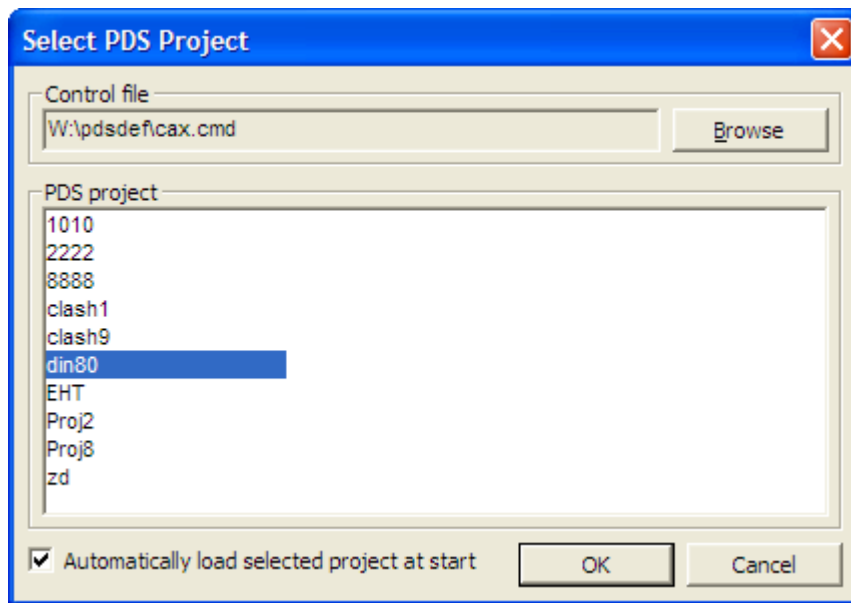
Label report file: if defined, CopyMoveRotate will update corresponding labels (see 3.13 *Edit piping attributes*).

Equipment models mapping file: if defined, CopyMoveRotate will preserve nozzle connections after copy of piping models (see 3.5 *Copy models/drawings*).


MicroStation timeout: defines the time out in minutes for the Transform models/drawings command.

3.3 Selecting a PDS project

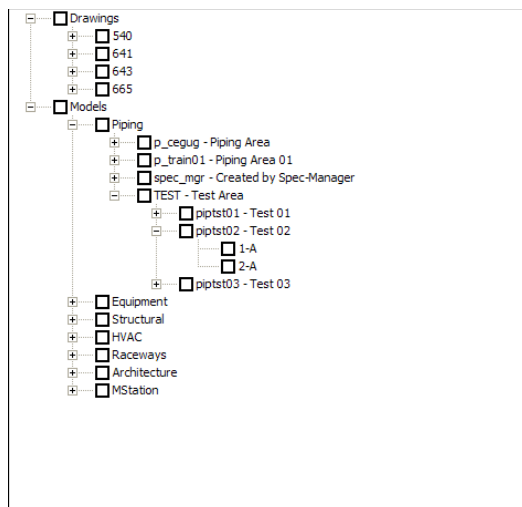
Go to **File** → **Select PDS Project**, this shows this dialogue window:



1. Select a PDS control file using the Browse button
2. Select a PDS project from the list (double-click on it)

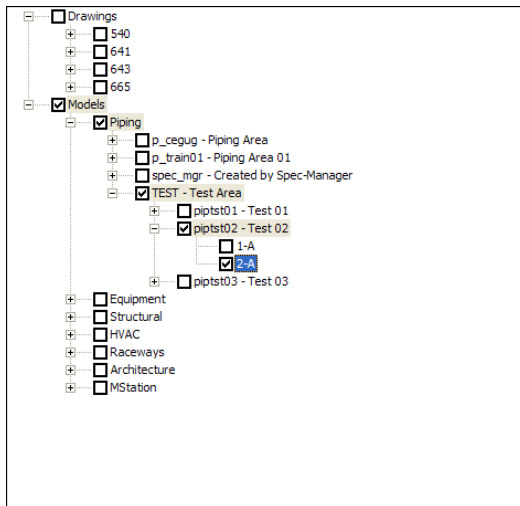
 Note – if you want to automatically load the last project tick the checkbox in the form. There is also a list of most recently used projects in the **File** menu which can be selected directly.


3. Now, the hierarchy of the project will show up in the project tree view:



3.4 Selecting objects in the tree view

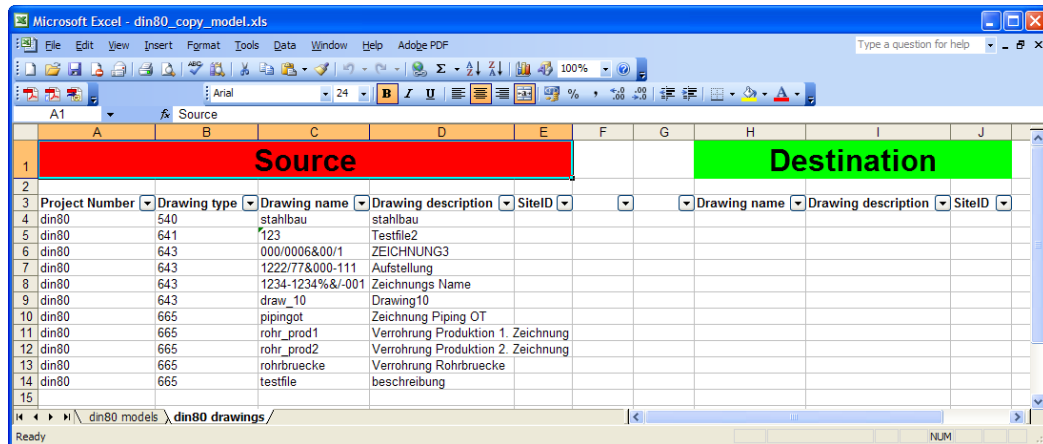
To select objects in the tree view click on the check boxes in front of the items.



 Note – you can drop a plain ASCII file with model and drawing names (separated by line breaks) onto the tree view to automatically tick the check boxes of these models/drawings. Wildcards (*, ?) may be used to define the model/drawing names in the ASCII file.

3.5 Copy models/drawings

1. Select the models/drawings or complete areas in the tree view for copying.
2. The Export function will transfer it to Excel
3. Edit the Excel file. There is one workbook for the models and one workbook for the drawings.



Source					Destination		
Project Number	Drawing type	Drawing name	Drawing description	SiteID	Drawing name	Drawing description	SiteID
din80	540	stahlbau	stahlbau				
din80	641	*123	Testfile2				
din80	643	000/0006&00/1	ZEICHNUNG3				
din80	643	1222/77&000-111	Aufstellung				
din80	643	1234-1234%&-001	Zeichnungs Name				
din80	643	draw_10	Drawing10				
din80	665	pipingot	Zeichnung Piping OT				
din80	665	rohr_prod1	Verrohrung Produktion 1. Zeichnung				
din80	665	rohr_prod2	Verrohrung Produktion 2. Zeichnung				
din80	665	rohrbruecke	Verrohrung Rohrbruecke				
din80	665	testfile	beschreibung				

The source structure must not be changed. The new destination structure for models and drawings may be configured by the user. All fields there are optional (except drawing/model name), for empty fields the source value is taken. For existing areas and sub-projects, the description will be changed according to the respective destination field. After saving your input file, use the **Import** button to start the copy process. New areas and framework sub-projects may also be created in this way. The models and drawings (including the drawing views) will be copied.

Overwrite existing models/drawings: If this checkbox is ticked, CopyMoveRotate will check if there is already a model/drawing with the same name. If there is, it will be overwritten, i.e. the same model_index_no/partition_no/dwg_index_no will be used. This is reasonable if the same models/drawings are always copied automatically. Without this checkbox, the target models/drawings would have to be deleted and replaced from the original files manually. This would cause gaps in the usage of model_index_no/partition_no, the defined SiteID-range would overflow very quickly. If this checkbox is not ticked, copying will stop with an error message if a target file with an identical name exists.

Preserve nozzle connections: if a piping model contains nozzle connection(s), they become invalid after a copy (of piping and corresponding equipment models) because of the new partition_no for equipment model(s). To correct this and to preserve nozzle connections in piping models after copying, **the equipment models mapping file** has to be defined in the Tools->Settings. This file contains the mapping between source and destination equipment models and has exactly the same format as the Excel file for copying of Models/Drawings. Select the equipment models and click the **Export** button to create it. The destination model name must be defined and must **exist** before starting with copy of piping models.

The workflow demonstrating how to preserve nozzle connections:

1. Select equipment models to copy
2. Export selection to Excel
3. Edit Excel file
4. Import and copy equipment models
5. Define the path to this Excel file from above in Tools-> Settings->Equipment models mapping file
6. Now proceed with copy of piping models

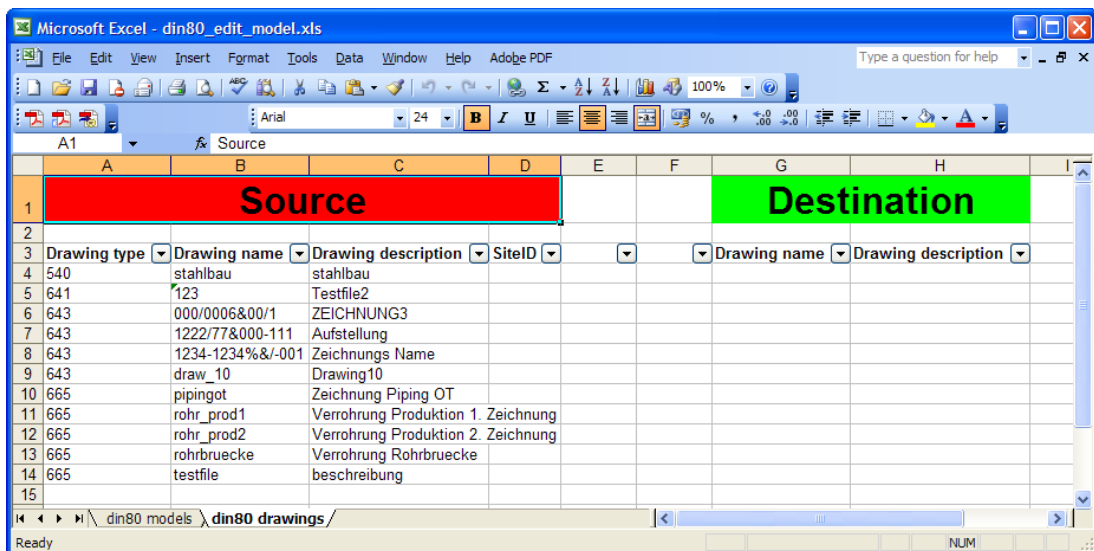
Copying of models between projects:

- Export models in source project
- Import models in destination project

📌 Note – RDB and graphical symbology must be equal. Naming conventions for models and drawings (according to PDS settings) must be recognised.

📌 Note – **Import only models/drawings changed since days:** if defined CopyMoveRotate processes only models/drawings, which were changed within the last N days. The changes are recognized by using the revision_date from pdtable_113.

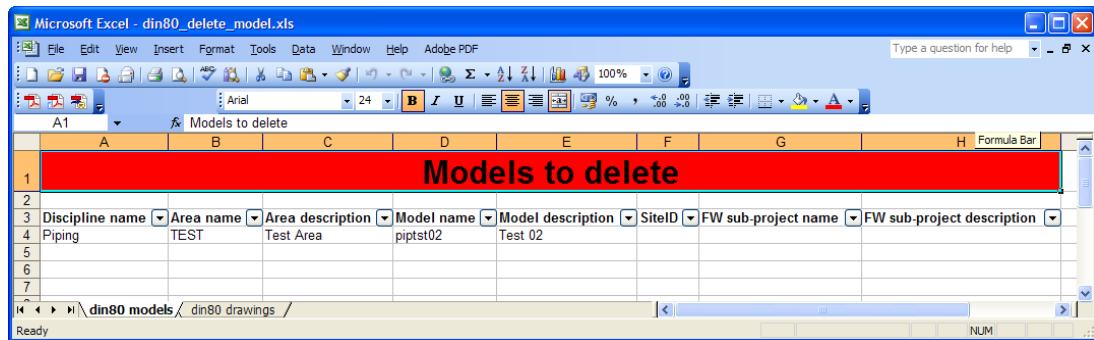
3.6 Edit models/drawings



All models and drawings can be renamed (and/or model/drawing description can be changed) through an Excel workbook.

📌 Note – naming conventions for models and drawings according to the PDS settings must be recognized.

3.7 Delete models/drawings



All models/drawings in the Excel file will be deleted. The file may not be changed.

Note – all files named Model.*/Drawing.* will be deleted, too

Note – **Delete models/drawings** can be used interactively or using Microsoft Excel (for batch mode).

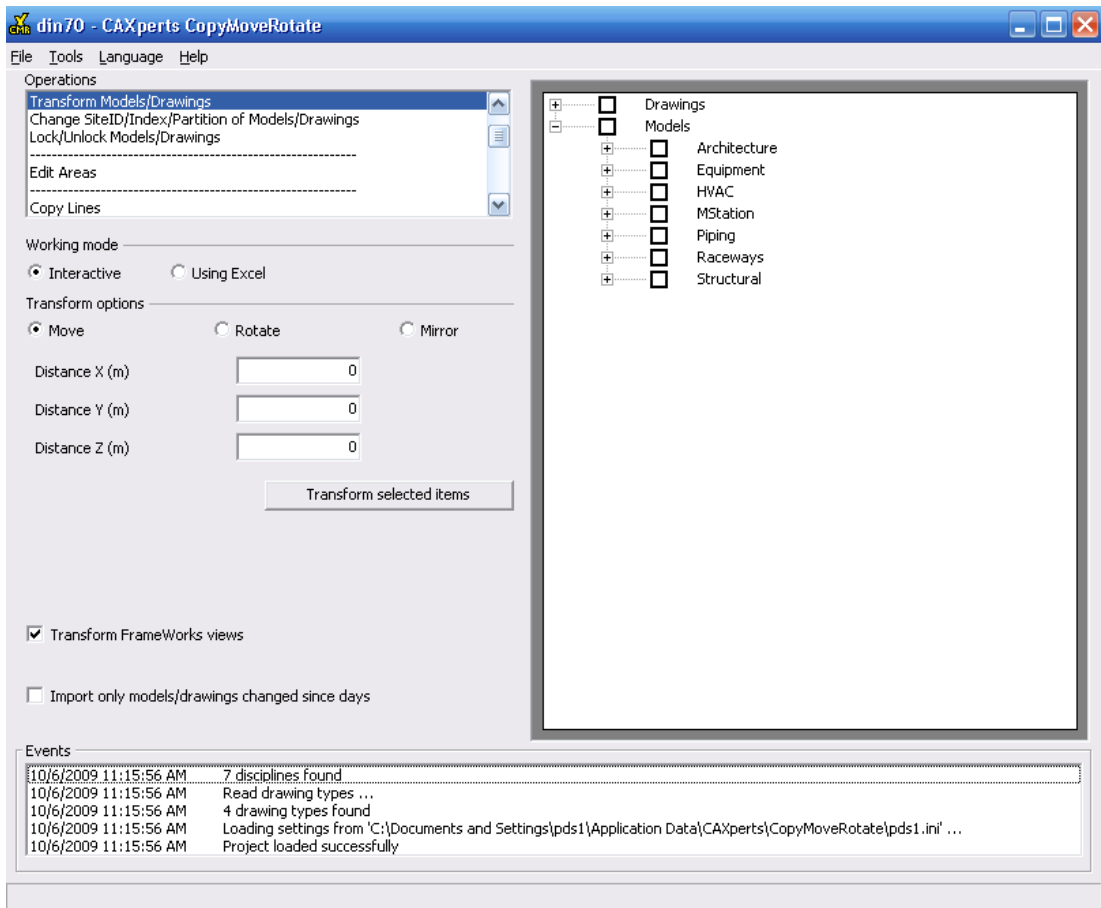
Note – **Import only models/drawings changed since days:** if defined CopyMoveRotate processes only models/drawings, which were changed within the last N days. The changes are recognized by using revision_date from phtable_113.

3.8 Transform models/drawings


Before **CopyMoveRotate** starts a process, the participating models/drawing are saved in the backup directory. The directory for reporting and backups is C:\temp by default.

1. Moving Models and Drawings

- Tick all models/areas or complete project you want to move



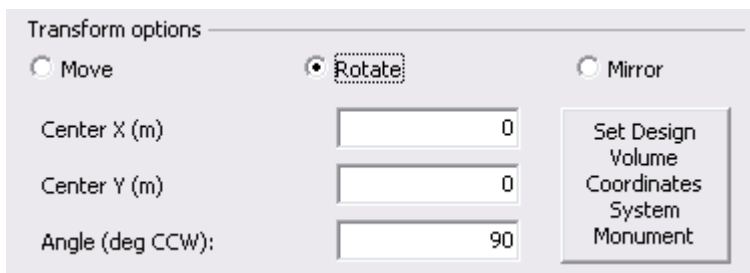
- Input distance values for the x, y, z direction to the new location

 Note – the distance values for moving are relative, so absolute values are not needed.


- FrameWorks views will also be translated and rotated if the checkbox “Transform FrameWorks views” is checked
- By pressing the **Import** button the models and drawings are processed consecutively.

2. Rotating Models and Drawings

- For the pivot point of rotation an absolute coordinate value is needed.

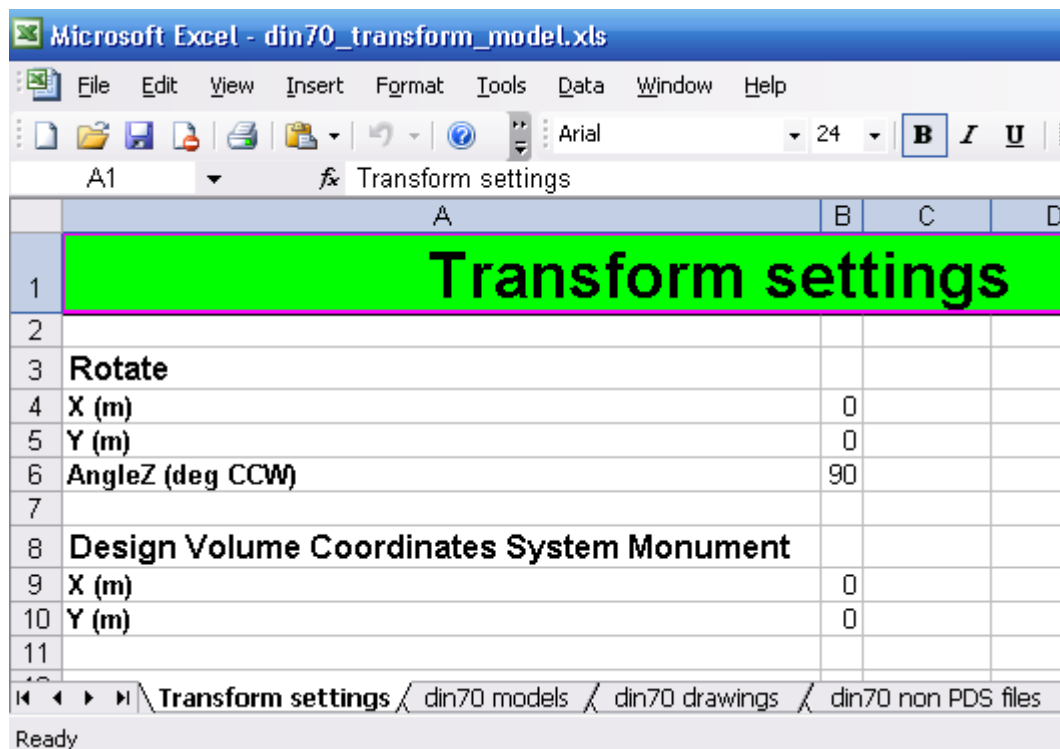


- If a Design Volume Coordinate System is used in the project, the values for this can be added in a separate form:

 Note – drawings cannot be mirrored at this stage. The rotation of models/models is only possible around the elevation axis. Drawings with composite view cannot be processed.

By pressing the **Transform selected items** button the models and drawings are processed consecutively.

Export ... to Excel generates an Excel file:



You may change the rotation settings on the first tab.

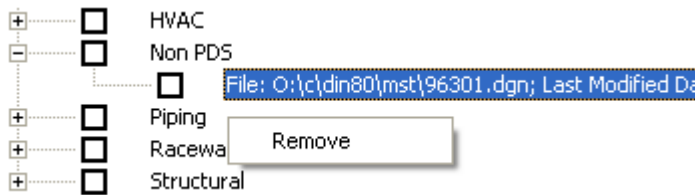
Handling for non-PDS files

MicroStation files can also be transformed by CopyMoveRotate.



Drag & Drop the directory with the MicroStation files or single .MicroStation file on the “Models” node of the tree view to treat the file as a model or on the “Drawings” tree node to treat it as a drawing.

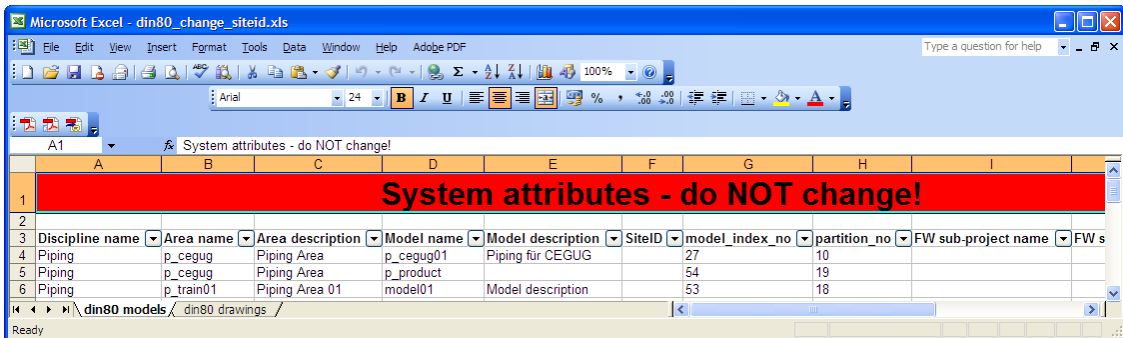
Use the context menu (right mouse button) to remove non-PDS files from the tree view.



Note – **Move&Rotate** can be used interactively or using Microsoft Excel (for batch mode).

Note – **Import only models/drawings changed since days:** if defined CopyMoveRotate processes only models/drawings, which were changed within the last N days. The changes are recognized by using `revision_date` from `phtable_113`.

3.9 Change site ID, index or partition of models/drawings




For all models the `site_id`, `model_index_no` and `partition_no` can be changed through an Excel workbook. For drawings the `site_id` and `dwg_index_no` can be changed accordingly.

The user has these options:

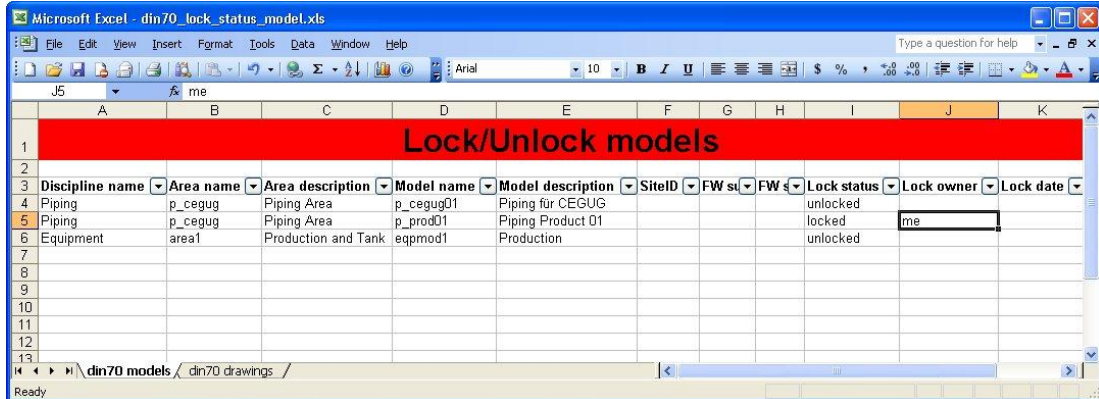
- Key in a new SiteID (this SiteID must already exist)
- Key in a new `model_index_no`/`partition_no` (has to be unused)
- Key in a new SiteID and `model_index_no`/`partition_no` (`model_index_no`/`partition_no` have to be in the range of the new SiteID)

Correct reference files: if ticked, the logical names of reference files in all models of the project will be corrected, if the `model_index_no` of the edited model was changed. This can take some time if the project contains many models. If **Correct reference files** is not ticked, the logical names of the reference files won't be corrected. Referenced models won't be recognised as intelligent PDS models anymore, they will be displayed as standard MicroStation reference files. To correct this, the models have to be re-referenced manually in PDS.

Note – the ranges for the `site_id` must first be set in PDS. When changing the `site_id` as the only value, the `model_index_no` and the `partition_no` will be automatically set to the next free values according their PDS `site_id` range settings in PDS.

 **Note – Import only models/drawings changed since days:** if defined CopyMoveRotate processes only models/drawings, which were changed within the last N days. The changes are recognized by using `revision_date` from `phtable_113`.

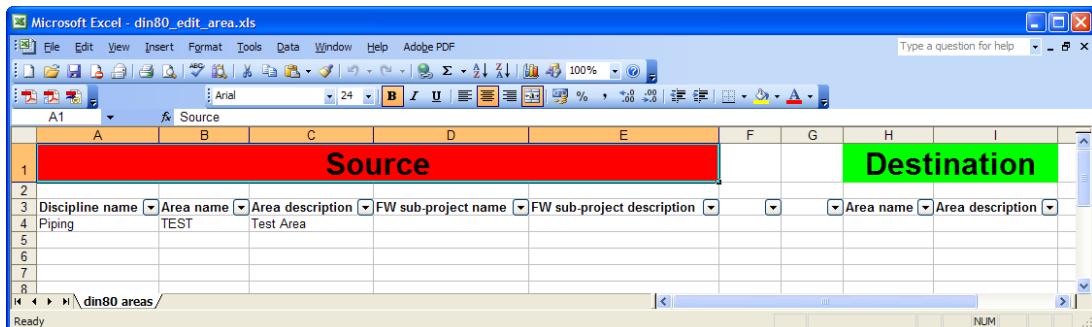
3.10 Lock/unlock models/drawings



Lock/Unlock models										
Discipline name	Area name	Area description	Model name	Model description	SiteID	FW su	FW	Lock status	Lock owner	Lock date
Piping	p_cegug	Piping Area	p_cegug01	Piping für CEGUG				unlocked		
Piping	p_cegug	Piping Area	p_prod01	Piping Product 01				locked	me	
Equipment	area1	Production and Tank	eqpm01	Production				unlocked		


Models/Drawings may be locked or unlocked. Type in the keyword **locked** or **unlocked** in the **Lock status** column. **Lock owner** can be a user defined string. If nothing is entered the name of the current user will be used as **Lock owner**.

3.11 Edit areas



Source					Destination	
Discipline name	Area name	Area description	FW sub-project name	FW sub-project description	Area name	Area description
Piping	TEST	Test Area				

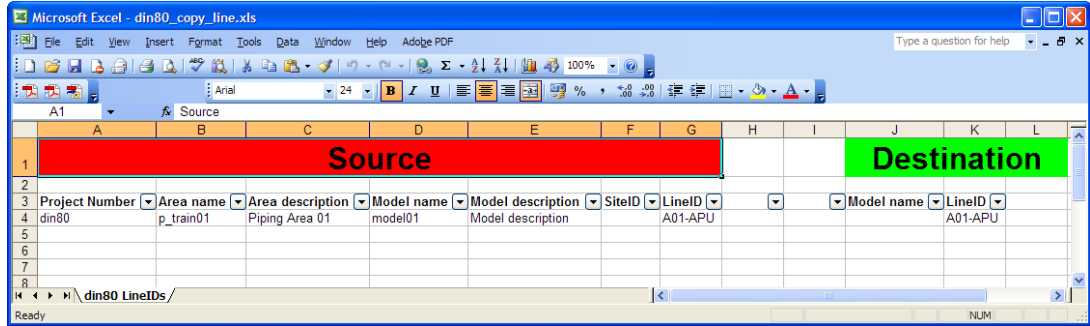
Area and/or description may be changed.

 **Note – naming conventions for models and drawings according to the PDS settings must be recognized.**

3.12 Copy lines

1. Select the lines in the tree view for copying.
2. The Export function transfers them to Excel


3. Edit the Excel file.





4. The source structure must not be changed. The new destination structure for lines may be configured by the user. All fields are optional here (except model name), for empty fields the source value is taken.

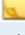
Copying of lines between projects:


- Export lines in source project
- Import lines in destination project

 Note – there is no check against the label description library. If a LineID consists out of several attributes (e.g. fluid code + NPD + ...) it won't be automatically updated; concatenated values must be updated separately. This change of database values should therefore only be done by experienced PDS administrators.

 Note – project version, graphical symbology settings, RDB and DDL structure must be equal in source and destination projects.

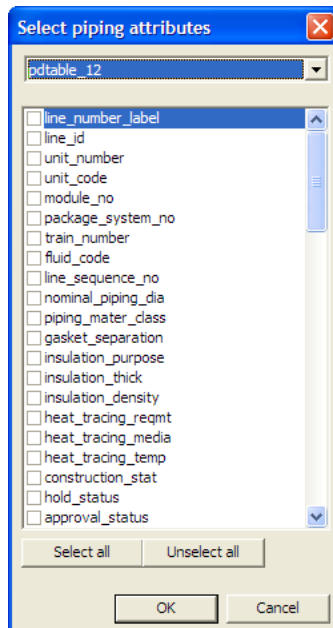
 Note – By default only unapproved lines will be processed. Enabling the checkbox **Process approved items** change this behaviour.

 Note – **Check for overlaps between segments:** if ticked, CopyMoveRotate will check before copying, if line segments to copy overlap with segments of lines which are already in the target model (the line to copy will not be checked if it overlaps internally). The copy process will be cancelled if there is an overlap. If **Check for overlaps between segments** is not ticked, lines will be copied without any checks.

 Note – **Import only models/drawings changed since days:** if defined CopyMoveRotate processes only models/drawings, which were changed within the last N days. The changes are recognized by using revision_date from pdtable_113.

3.13 Edit piping attributes

The Design Schema for piping attributes from pdtable_12, _50, _67, _80 can be revised with values from an Excel Workbook. For this, first configure the attributes you want to export by selecting the appropriate attributes from your single pd_tables.



The attributes will be reported to an Excel file (Note: the report won't be an 1:1 image of the DD-Schema). If the **Group rows** checkbox is ticked on the entries will be grouped also.

System attributes - do NOT change!						User attributes					
Area	Area description	Mode	Model description	partition_n	system_unique_n	line_number_label	line_id	unit_number	train_number	fluid_cod	piping_mater_class
p_pegug	Cegug Area	p_pegug01	Piping für CEGUG	10	5242902	AC2ceonit-100-M10C2BS	seconit-AC				14 M10C2BS
p_pegug	Cegug Area	p_pegug01	Piping für CEGUG	10	5242903	AC2ceonit-150-M10C0KS	seconit-AC				14 M10C0KS
p_pegug	Cegug Area	p_pegug01	Piping für CEGUG	10	5242883	ASUC1001-200-M10C2BS	UC1001-AS	UN			35 M10C2BS
p_pegug	Cegug Area	p_pegug01	Piping für CEGUG	10	5242888	ASUC1002-25-M10C2BS	UC1002-AS	UN			35 M10C2BS
p_pegug	Cegug Area	p_pegug01	Piping für CEGUG	10	5242886	ASUC1003-500-M10C2BS	UC1003-AS	UN			35 M10C2BS
p_pegug	Cegug Area	p_pegug01	Piping für CEGUG	10	5242889	ASUC1003-200-M10C2BS	UC1003-AS	UN			35 M10C2BS
p_pegug	Cegug Area	p_pegug01	Piping für CEGUG	10	5242890	ASUC1004-80-M10C2BS	UC1004-AS	UN			35 M10C2BS
p_pegug	Cegug Area	p_pegug01	Piping für CEGUG	10	5242891	AUC2001-200-M10C2BS	UC2001-A				11 M10C2BS
p_pegug	Cegug Area	p_pegug01	Piping für CEGUG	10	5242893	AUC2001-80-M10C2BS	UC2001-A				11 M10C2BS
p_pegug	Cegug Area	p_pegug01	Piping für CEGUG	10	5242901	AUC2002-20-M10C2BS	UC2002-A				11 M10C2BS
p_pegug	Cegug Area	p_pegug01	Piping für CEGUG	10	5242897	AUC2002-500-M10C2BS	UC2002-A				11 M10C2BS
p_pegug	Cegug Area	p_pegug01	Piping für CEGUG	10	5242912	YUC001-50-M10C2BS-N	UC001-Y	UN01			861 M10C2BS
p_pegug	Cegug Area	p_pegug01	Piping für CEGUG	10	5242904	YUC002-100-M10C2BS-A	UC002-Y	UN01			861 M10C2BS
p_pegug	Cegug Area	p_pegug01	Piping für CEGUG	10	5242905	YUC003-200-M10C2BS-F	UC003-Y	UN01			861 M10C2BS
p_pegug	Cegug Area	p_pegug01	Piping für CEGUG	10	5242908	YUC004-200-M10C2BS-F	UC004-Y	UN01			861 M10C2BS
p_pegug	Cegug Area	p_pegug01	Piping für CEGUG	10	5242911	YUC003-99-200-M10C2BS	UC003-Y	UN01			861 M10C2BS
TEST	Test Area	p_clash1	Testmodel Clash	17	6912897	AEA001-100-M10C2BS-F	A001-AE	A			17 M10C2BS
TEST	Test Area	p_clash2	Testmodel 2 Clash	18	9437185	AEB002-100-M10C2BS-F	B002-AE				17 M10C2BS
TEST	Test Area	pipst01	Test 01	12	6291465	-100-M10C2BS-	-				0 M10C2BS
TEST	Test Area	pipst01	Test 01	12	6291461	-150-M10C2BS-	-				0 M10C2BS
TEST	Test Area	pipst01	Test 01	12	6291466	-25-M10C2BS-	-				0 M10C2BS
TEST	Test Area	pipst01	Test 01	12	6291460	-80-M10C2BS-	-				0 M10C2BS
TEST	Test Area	pipst02	Test 02	13	6916745	A1-100-M10C2BS-	I-A				11 M10C2BS
TEST	Test Area	pipst02	Test 02	13	6916756	A1-20-M10C2BS-	I-A				11 M10C2BS
TEST	Test Area	pipst02	Test 02	13	6916775	A1-25-C10C3SP-	I-A				11 C10C3SP

The different pd_table sections are in separate sheets. The attribute values can be adapted in the user attribute area.


Updating labels: if any of the attributes have been changed which are part of the label, CopyMoveRotate can automatically update the affected labels, if label report file is defined in Tools->Settings.


Note – use PD_Shell->Reference Data->Standard Note Library->Report to create label report file.


CopyMoveRotate reads the label report file and replaces the spaces by underscores in the all label names. If the resulting string exists as a column of pdtable_12 (DD-Schema), the label is updated. The following standard PDS label types will be always updated:


- 310 - line_number_label
- 311 - line_id


- 335 - inspections_iso_id


 Note – The user must not change attributes in the system attributes area.


 Note – The **change of database** values should therefore only be done by **experienced PDS administrators**.

 Note – Updating of labels is limited to standard PDS format settings and attributes. For special cases and settings the attributes which are updated by using labels have to be edited using Excel similar to stand-alone values.

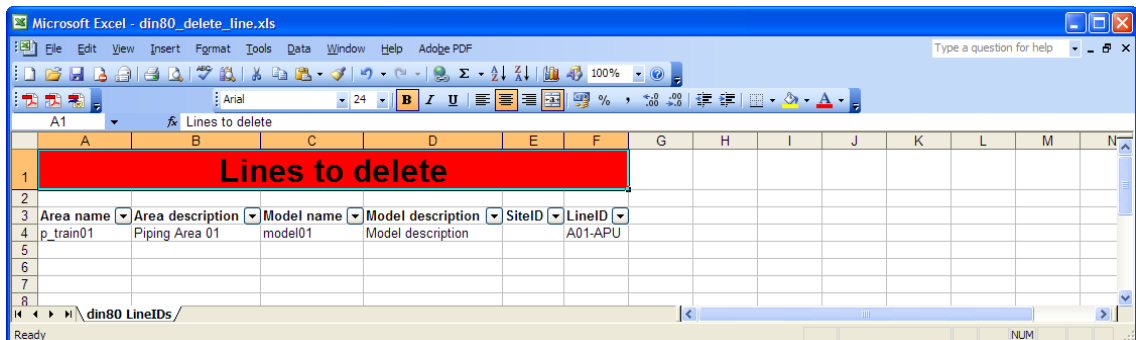
 Note – Naming conventions, attribute type and attribute length according design.ddl must be recognized.

 Note – By default only unapproved lines will be processed. Enabling the checkbox **Process approved items** change this behaviour.


 Note – The **Group rows** checkbox, which is ticked on by default, will eliminate redundant entries in the output Excel sheet.


 Note – **Import only models/drawings changed since days:** if defined CopyMoveRotate processes only models/drawings, which were changed within the last N days. The changes are recognized by using revision_date from phtable_113.


3.14 Delete lines



All lines in the Excel file will be deleted. The file may not be changed.


 Note – **Delete Lines** can be used interactively or using Microsoft Excel (for batch mode).

 Note – By default only unapproved lines will be processed. Enabling the checkbox **Process approved items** change this behaviour.

 Note – **Import only models/drawings changed since days:** if defined CopyMoveRotate processes only models/drawings, which were changed within the last N days. The changes are recognized by using revision_date from phtable_113.

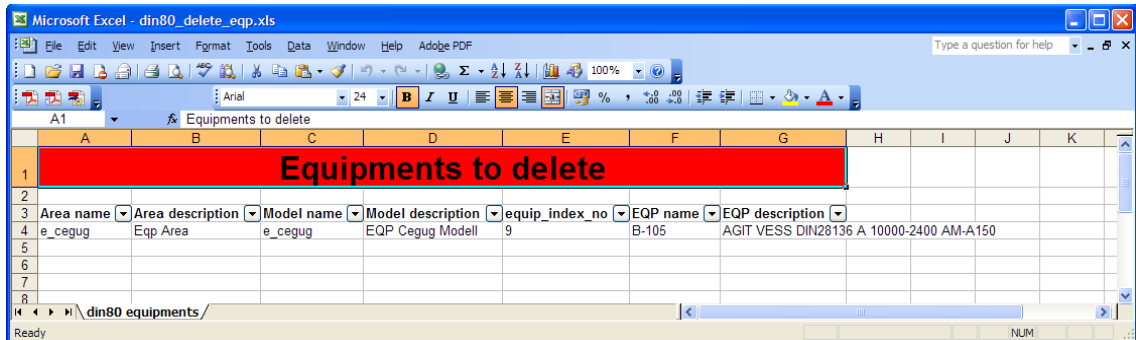
3.15 Transform lines

See chapter 3.8 *Transform models/drawings*.

 Note – By default only unapproved lines will be processed. Enabling the checkbox **Process approved items** change this behaviour.

- ☐ Note – naming conventions, attribute type and attribute length according eqp.dtl must be recognized.
- ☐ Note – By default only unapproved equipment will be processed. Enabling the checkbox **Process approved items** change this behaviour.

3.18 Delete equipment



All equipment in the Excel file will be deleted. The file may not be changed.

- ☐ Note – **Delete equipment** can be used interactively or using Microsoft Excel (for batch mode).
- ☐ Note – By default only unapproved equipment will be processed. Enabling the checkbox **Process approved items** change this behaviour.
- ☐ Note – **Import only models/drawings changed since days:** if defined CopyMoveRotate processes only models/drawings, which were changed within the last N days. The changes are recognized by using revision_date from ptable_113.

3.19 Transform equipment

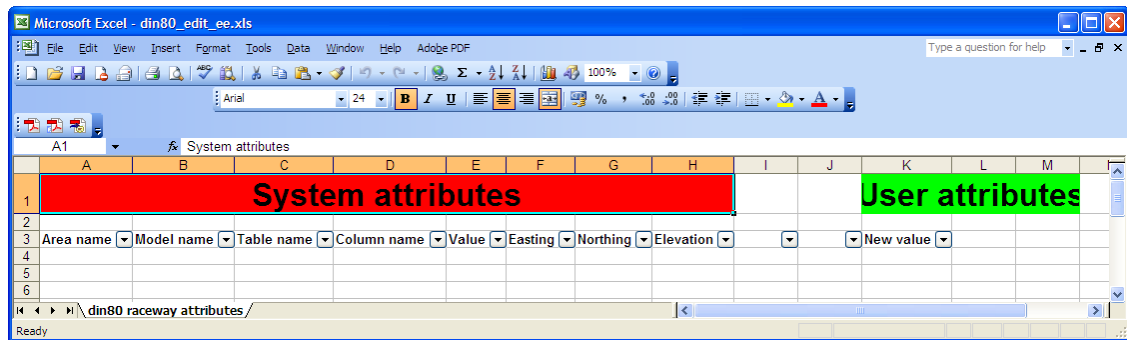
See chapter 3.8 *Transform models/drawings*.

- ☐ Note – By default only unapproved equipment will be processed. Enabling the checkbox **Process approved items** change this behaviour.
- ☐ Note – **Import only models/drawings changed since days:** if defined CopyMoveRotate processes only models/drawings, which were changed within the last N days. The changes are recognized by using revision_date from ptable_113.

3.20 Edit nozzle attributes


See chapter 3.17 *Edit equipment attributes*.

3.21 Edit raceway attributes

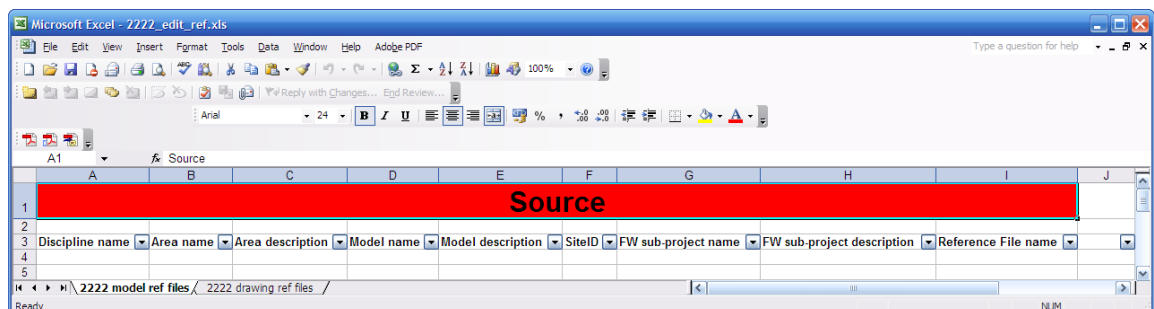


The attributes of all raceway models selected in the tree view are written into an Excel file, where you can change these values. The saved Excel file can be imported and the attributes are updated accordingly.

 Note – naming conventions, attribute type and attribute length must be recognized.

 Note – **Import only models/drawings changed since days:** if defined CopyMoveRotate processes only models/drawings, which were changed within the last N days. The changes are recognized by using `revision_date` from `phtable_113`.

3.22 Edit reference files



The user may change reference files of models/drawings with this function. If **CopyMoveRotate** finds the new reference file in `phtable_113` of the current project schema, it will automatically retrieve the logical name and description file and attach the reference file as an intelligent PDS model.

If the user changes the drawing border file, logical name and description of the new reference file will stay constant – “BORDER”, “DRAWING BORDER FILE”.

The source reference file will be replaced in all drawing views.

3.23 Command line mode

CopyMoveRotate also works in command line mode. If you click on **Tools** → **Create batch file**, a demonstration batch file will be generated.

`copymoverotate /?` shows the available command line parameters:

CAXperts CopyMoveRotate

Command line arguments for CopyMoveRotate.exe:

- /CMD control_file.cmd - Path to the control file.
If control file is not defined, last control file will be used.
- /Project project_name - PDS-Project name.
If project name is not defined, last project will be used.
- /Mode mode - Execution modes:
 - MODEL_COPY - copy models/drawings
 - MODEL_EDIT - edit models/drawings
 - MODEL_DELETE - delete models/drawings
 - MODEL_TRANSFORM - transform models/drawings
 - CHANGE_SITE_ID - change SiteID/Index/Partition of models/drawings
 - CHANGE_LOCK_STATUS - lock/unlock models/drawings
 - AREA_EDIT - edit areas
 - DD_EDIT - edit piping attributes
 - LINE_COPY - copy lines
 - LINE_DELETE - delete lines
 - LINE_TRANSFORM - transform lines
 - EQP_COPY - copy equipment
 - EQP_EDIT - edit equipment attributes
 - EQP_DELETE - delete equipment
 - EQP_TRANSFORM - transform equipment
 - EE_EDIT - edit raceway attributes
 - REF_EDIT - edit reference files of models/drawings
- /XLS excel_file.xls - Path to the Excel file to process
- /Config config_file.ini - Config file.
If not defined, last config file will be used.
- /export mode - If defined excel file will be created for defined execution mode
- /batch - If defined CopyMoveRotate will be run in batch mode

Example:

```
CopyMoveRotate.exe /CMD control_file.cmd /Project project_name /Mode  
MODEL_COPY  
/XLS excel_file.xls /batch
```

3.24 Colour mark-up in reports

Most **CopyMoveRotate** processes are reported into Excel workbooks. For every processed model/drawing the status is indicated in three possible colours:

- Status: OK; colour: green: the model/drawing passed the process without any error.
- Status: warning; colour: yellow: while processing the model/drawing some problems occurred, which are reported in the next field 'description'. These warning messages should be checked in the appropriate models.
- Status: error; Colour: red: the process for the model/drawing failed. The reason for this is described in the 'description' field

4 Technical support

Need more help? Contact CAXperts support by email, online, or phone:

<mailto:support@caxperts.com>

http://www.caxperts.com/component/option,com_contact